

Metric Conversions

MM	x	0.03937	=	Inches
Inches	x	25.4	=	MM
Grams	x	0.03527	=	Ounces
Ounces	x	28.349527	=	Grams

EAGLE ROCK[®]
TECHNOLOGIES

Knurlcraft[™]

Knurling Tools, Form Type – Double Knurl

No. K1-201, K1-202

**The Original Scissor Type
Knurling Tools**

**Guaranteed to outlive and outperform
any of the imported knockoffs.**

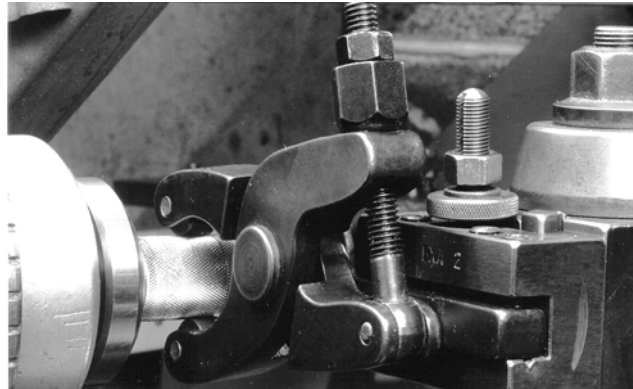
Knurling pressures are absorbed between the Knurls, NOT your lathe bed, compound, centers or feed screws. Fast setup, instantly ready for knurling. Knurling patterns are clean and sharp with no double tracking.

Our exclusive one piece offset CNC shank insure maximum rigidity with minimal X-axis overhang. Each tool includes one set of Medium pitch, Diamond pattern knurls.

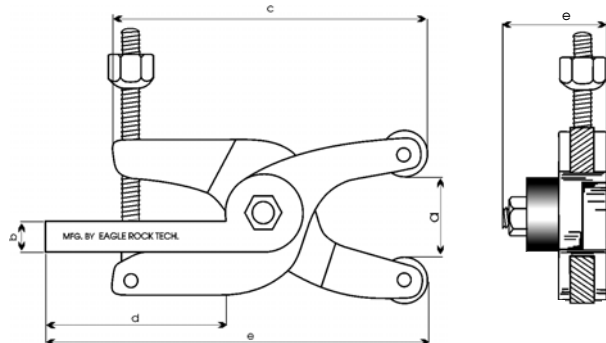
Features

- **Machine:** Manual or CNC Lathes
- **Capacity:** 0-2¹/₈" or 2¹/₈-4"
- **Knurl Size:** (E) 3/4 x 3/8 x 1/4
- **Knurl Patterns:** Straight (2 knurls AA) Diamond, Male (1 knurl BL, 1 knurl BR)
- **Knurls Included:** 1 set (1 knurl BL and 1 knurl BR) Medium pitch, Diamond pattern

**Toolbox
Basics[™]**



Manual Lathe
Shank



EAGLE ROCK[®] TECHNOLOGIES INC.

*Manufacturers of Specialty
Tooling and Accessories since 1963*

One Eagle Rock Drive
Bath, Pennsylvania
18014-9648

1-610-759-5200 • Fax: 1-610-759-4340
1-800-EAGLEROCK • 1-800-324-5376
www.EagleRockONLINE.com

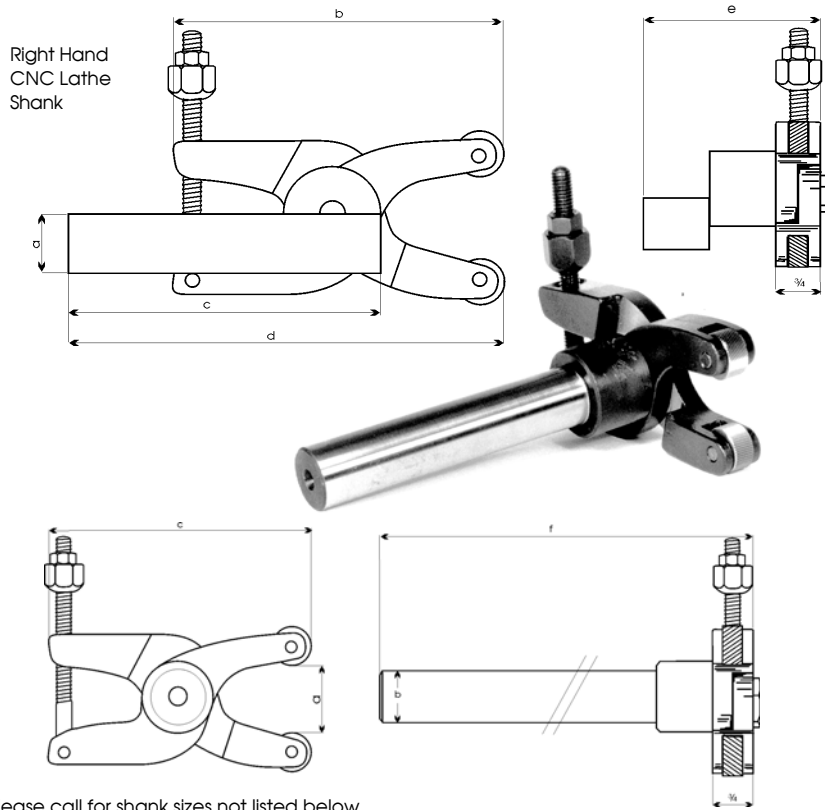
Metric Conversions

MM	x	0.03937	=	Inches
Inches	x	25.4	=	MM
Grams	x	0.03527	=	Ounces
Ounces	x	28.349527	=	Grams



Knurling Tools, Form Type – Double Knurl

No. K1-201, K1-202 (Cont'd)



Please call for shank sizes not listed below.

Capacity	a	b	c	d	e	Knurl Size	Cat. No.
0-2 1/8"	5/8"	5.0	3.0	6.0	1.3	E- 3/4 x 5/8 x 1/4	K1-201-21-0625M-E
0-2 1/8"	3/4 Rd	5.0	—	—	6 3/4	E- 3/4 x 5/8 x 1/4	K1-201-21-0750D-E
0-2 1/8"	3/4 LH	5.0	5.0	7.0	2.8	E- 3/4 x 5/8 x 1/4	K1-201-21-0750L-E
0-2 1/8"	3/4 RH	5.0	5.0	7.0	2.8	E- 3/4 x 5/8 x 1/4	K1-201-21-0750R-E
0-2 1/8"	1" Rd	5.0	—	—	6 3/4	E- 3/4 x 5/8 x 1/4	K1-201-21-1000D-E
0-2 1/8"	1" LH	5.0	5.0	7.0	2.8	E- 3/4 x 5/8 x 1/4	K1-201-21-1000L-E
0-2 1/8"	1" RH	5.0	5.0	7.0	2.8	E- 3/4 x 5/8 x 1/4	K1-201-21-1000R-E

Capacity	a	b	c	d	e	Knurl Size	Cat. No.
2 1/8-4"	3/4	7 3/4	3 1/2	8.0	1.5	E- 3/4 x 5/8 x 1/4	K1-202-40-0750M-E
2 1/8-4"	3/4 Rd	7 3/4	—	—	6 3/4	E- 3/4 x 5/8 x 1/4	K1-202-40-0750D-E
2 1/8-4"	3/4 LH	7 3/4	5.0	8.0	2.8	E- 3/4 x 5/8 x 1/4	K1-202-40-0750L-E
2 1/8-4"	3/4 RH	7 3/4	5.0	8.0	2.8	E- 3/4 x 5/8 x 1/4	K1-202-40-0750R-E
2 1/8-4"	1" Rd	7 3/4	—	—	6 3/4	E- 3/4 x 5/8 x 1/4	K1-202-40-1000D-E
2 1/8-4"	1" LH	7 3/4	5.0	8.0	2.8	E- 3/4 x 5/8 x 1/4	K1-202-40-1000L-E
2 1/8-4"	1" RH	7 3/4	5.0	8.0	2.8	E- 3/4 x 5/8 x 1/4	K1-202-40-1000R-E



Manufacturers of Specialty Tooling and Accessories since 1963

One Eagle Rock Drive
Bath, Pennsylvania
18014-9648

1-610-759-5200 • Fax: 1-610-759-4340
1-800-EAGLEROCK • 1-800-324-5376

www.EagleRockONLINE.com