

Metric Conversions

MM x 0.03937 = Inches
 Inches x 25.4 = MM
 Grams x 0.03527 = Ounces
 Ounces x 28.349527 = Grams



Knurling Tools, Form Type – Double Knurl

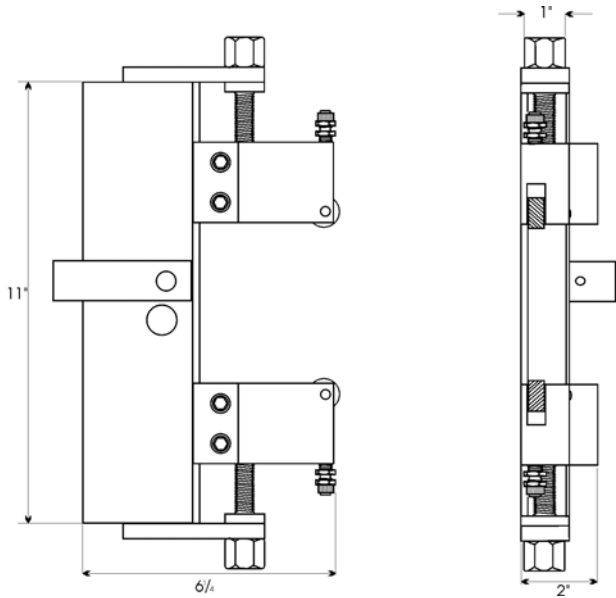
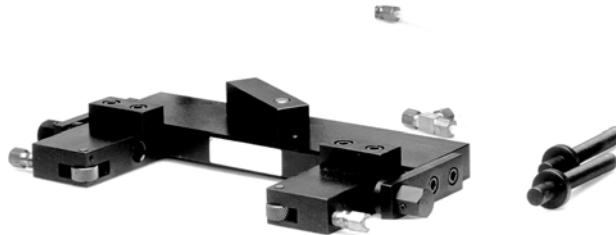
No. K1-203

Clamp Style Knurling Tool

Heavy duty clamp style design absorbs all knurling pressures. Tool is completely self-centering and will accommodate any diameter up to 6 inches. The jaws provide direct coolant flow on each knurl to maximize knurl life and performance. Shank can be located for left or right hand orientation. One set of Medium pitch, Diamond pattern (BL and BR) knurls is included. Also included is a complete set of coolant lines and fittings to hook up to your machine's coolant system.

Features

- **Machine:** Manual and CNC Lathes
- **Capacity:** 0-6"
- **Knurl Size:** (E) $3/8 \times 3/8 \times 1/4$ "
- **Knurl Patterns:** Straight (2 knurls AA) Diamond, Male (1 knurl BL, 1 knurl BR)
- **Knurls Included:** 1 set Medium pitch, Diamond pattern



Capacity	Shank	Knurl Size	Cat. No.
0-6"	1"	E- $3/8 \times 3/8 \times 1/4$ "	K1-203-1000U-E

EAGLE ROCK TECHNOLOGIES INC. *Manufacturers of Specialty Tooling and Accessories since 1963*

One Eagle Rock Drive
 Bath, Pennsylvania
 18014-9648

1-610-759-5200 • Fax: 1-610-759-4340
 1-800-EAGLEROCK • 1-800-324-5376
www.EagleRockONLINE.com