

Metric Conversions

MM	x	0.03937	=	Inches
Inches	x	25.4	=	MM
Grams	x	0.03527	=	Ounces
Ounces	x	28.349527	=	Grams



Knurling Tools, Form Type – Single Knurl

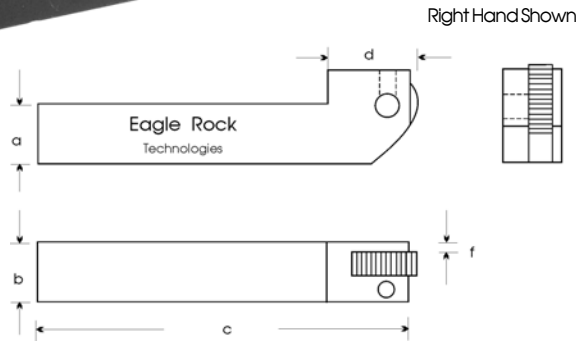
No. K1-29

Bump Type Knurling Tools

With CNC shanks. Available in either Left or Right Hand Shanks. Each holder includes one Medium pitch, Straight (AA) pattern knurl.

Features

- **Machine:** CNC Lathe
- **Knurl Size:** see below
- **Knurl Patterns:** Straight (1 knurl AA) Diamond, Male (1 knurl GV), Diamond, Female (1 knurl GE)
- **Knurls Included:** 1 each Medium pitch, Straight (AA) pattern



a	b	c	d	e	f	Knurl Size	Cat. No.
9/16 RH	3/8	5	17/32	1/2	1/16	A- 9/16 x 5/32 x 1/8	K1-29-0312R-A
5/16 LH	3/8	5	17/32	1/2	1/16	A- 5/16 x 5/32 x 1/8	K1-29-0312L-A
3/8 RH	3/8	3	25/32	5/8	1/16	A- 3/8 x 5/32 x 1/8	K1-29-0375R-A
3/8 LH	3/8	3	25/32	5/8	1/16	A- 3/8 x 5/32 x 1/8	K1-29-0375L-A
1/2 RH	1/2	3 1/2	1 1/32	3/4	.100	B- 1/2 x 3/16 x 3/16	K1-29-0500R-B
1/2 LH	1/2	3 1/2	1 1/32	3/4	.100	B- 1/2 x 3/16 x 3/16	K1-29-0500L-B
5/8 RH	5/8	4	15/16	1	.100	C- 5/8 x 1/4 x 1/4	K1-29-0625R-C
5/8 LH	5/8	4	15/16	1	.100	C- 5/8 x 1/4 x 1/4	K1-29-0625L-C
3/4 RH	3/4	4 1/2	1 3/32	1 1/8	1/8	E- 3/4 x 3/8 x 1/4	K1-29-0750R-E
3/4 LH	3/4	4 1/2	1 3/32	1 1/8	1/8	E- 3/4 x 3/8 x 1/4	K1-29-0750L-E
3/4 RH	1	4 1/2	1 3/32	1 1/8	1/4	G- 3/4 x 1/2 x 1/4	K1-29-0750R-G
3/4 LH	1	4 1/2	1 3/32	1 1/8	1/4	G- 3/4 x 1/2 x 1/4	K1-29-0750L-G
1 RH	1	6	1 1/2	1 3/8	1/4	E- 3/4 x 3/8 x 1/4	K1-29-1000R-E
1 LH	1	6	1 1/2	1 3/8	1/4	E- 3/4 x 3/8 x 1/4	K1-29-1000L-E
1 RH	1	6	1 1/2	1 3/8	1/4	K- 1 x 3/8 x 5/16	K1-29-1000R-K
1 LH	1	6	1 1/2	1 3/8	1/4	K- 1 x 3/8 x 5/16	K1-29-1000L-K
1 RH	1 1/4	6	1 1/2	1 1/2	1/4	J- 1 1/4 x 1/2 x 1/2	K1-29-1000R-J
1 LH	1 1/4	6	1 1/2	1 1/2	1/4	J- 1 1/4 x 1/2 x 1/2	K1-29-1000L-J

EAGLE ROCK TECHNOLOGIES INC. *Manufacturers of Specialty Tooling and Accessories since 1963*

One Eagle Rock Drive
Bath, Pennsylvania
18014-9648

1-610-759-5200 • Fax: 1-610-759-4340
1-800-EAGLEROCK • 1-800-324-5376
www.EagleRockONLINE.com

Metric Conversions

MM x 0.03937 = Inches
 Inches x 25.4 = MM
 Grams x 0.03527 = Ounces
 Ounces x 28.349527 = Grams



Knurling Tools, Form Type – Single Knurl

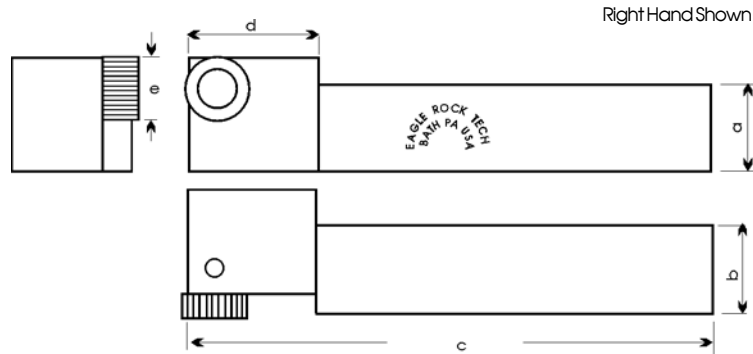
No. K1-29

Bump Type “Up-To-The-Shoulder” Knurling Tool

With CNC Shanks. Uses Counterbored knurls to knurl up to a shoulder. Available in either Left or Right hand shanks. Each holder includes one Medium pitch, Straight pattern (AA) knurl.

Features

- **Machine:** CNC Lathe
- **Knurl Size:** see below
- **Knurl Patterns:** Straight (1 knurl AA)
Diamond, Male (1 knurl GV),
Diamond, Female (1 knurl GE)
- **Knurls Included:** 1 each Medium pitch,
Straight pattern (AA)



a	b	c	d	e	Knurl Size	Cat. No.
5/16 RH	3/8	5	17/32	1/2	AV - 15x6x6/8	K1-29-0312R-AV
5/16 LH	3/8	5	17/32	1/2	AV - 15x6x6/8	K1-29-0312L-AV
3/8 RH	3/8	3	25/32	5/8	AV - 15x6x6/8	K1-29-0375R-AV
3/8 LH	3/8	3	25/32	5/8	AV - 15x6x6/8	K1-29-0375L-AV
1/2 RH	1/2	3 1/2	1 1/32	3/4	AV - 15x6x6/8	K1-29-0500R-AV
1/2 LH	1/2	3 1/2	1 1/32	3/4	AV - 15x6x6/8	K1-29-0500L-AV
1/2 RH	1/2	3 1/2	1 1/32	3/4	L - 20x8x10/12	K1-29-0500R-L
1/2 LH	1/2	3 1/2	1 1/32	3/4	L - 20x8x10/12	K1-29-0500L-L
5/8 RH	5/8	4	15 1/16	1	L - 20x8x10/12	K1-29-0625R-L
5/8 LH	5/8	4	15 1/16	1	L - 20x8x10/12	K1-29-0625L-L
3/4 RH	3/4	4 1/2	13 3/32	1 1/8	L - 20x8x10/12	K1-29-0750R-L
3/4 LH	3/4	4 1/2	13 3/32	1 1/8	L - 20x8x10/12	K1-29-0750L-L
1 RH	1 1/4	6	1 1/2	1 1/2	L - 20x8x10/12	K1-29-1000R-L
1 LH	1 1/4	6	1 1/2	1 1/2	L - 20x8x10/12	K1-29-1000L-L

EAGLE ROCK TECHNOLOGIES INC. *Manufacturers of Specialty Tooling and Accessories since 1963*

One Eagle Rock Drive
 Bath, Pennsylvania
 18014-9648

1-610-759-5200 • Fax: 1-610-759-4340
 1-800-EAGLEROCK • 1-800-324-5376
www.EagleRockONLINE.com

Metric Conversions

MM x 0.03937 = Inches
 Inches x 25.4 = MM
 Grams x 0.03527 = Ounces
 Ounces x 28.349527 = Grams



Knurling Tools, Form Type – Single Knurl

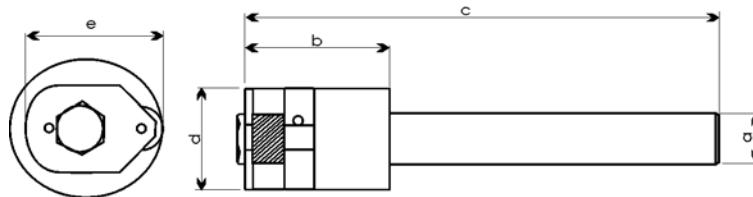
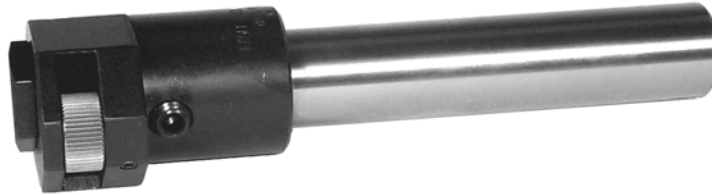
No. K1-29

Bump Type Knurling Tools

With Round shanks. Each holder includes one Medium pitch, Straight (AA) pattern knurl.

Features

- **Machine:** CNC Lathe
- **Knurl Size:** L-20x8x10/12
- **Knurl Patterns:** Straight (1 knurl AA), Diamond, Male (1 knurl GV), Diamond, Female (1 knurl GE)
- **Knurls Included:** 1 Medium pitch, Straight pattern (AA)



a	b	c	d	e	Knurl Size	Cat. No.
1/2"	3	6	1 1/2	2.2	B- 1/2 x 3/16 x 3/16	K1-29-0500D-B
5/8	3	6	1 1/2	2.2	C- 5/8 x 1/4 x 1/4	K1-29-0625D-C
3/4	2	7	1 1/2	2.2	E- 3/4 x 3/8 x 1/4	K1-29-0750D-E
1	2	7	1 1/2	2.2	E- 3/4 x 3/8 x 1/4	K1-29-1000D-E
1 1/4	2	7	1 1/2	2.2	E- 3/4 x 3/8 x 1/4	K1-29-1250D-E
1 1/2	2	7	1 1/2	2.2	E- 3/4 x 3/8 x 1/4	K1-29-1500D-E

EAGLE ROCK TECHNOLOGIES INC. *Manufacturers of Specialty Tooling and Accessories since 1963*

One Eagle Rock Drive
 Bath, Pennsylvania
 18014-9648

1-610-759-5200 • Fax: 1-610-759-4340
 1-800-EAGLEROCK • 1-800-324-5376
www.EagleRockONLINE.com

Metric Conversions

MM x 0.03937 = Inches
 Inches x 25.4 = MM
 Grams x 0.03527 = Ounces
 Ounces x 28.349527 = Grams



Knurling Tools, Form Type – Single Knurl

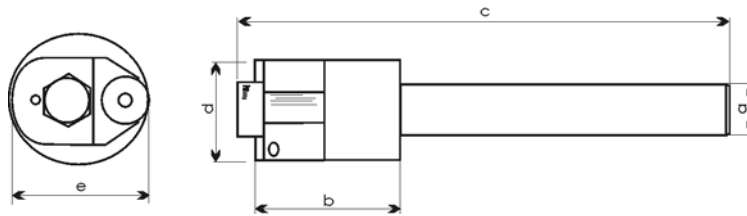
No. K1-29

**Bump Type “Up-To-The-Shoulder”
Knurling Tools**

With Round shanks. Uses Counterbored knurls to knurl up to a shoulder. Each tool includes one Medium pitch, Straight pattern (AA) knurl.

Features

- **Machine:** CNC Lathe
- **Knurl Size:** see below
- **Knurl Patterns:** Straight (1 knurl AA)
Diamond, Male (1 knurl GV),
Diamond, Female (1 knurl GE)
- **Knurls Included:** 1 each Medium pitch,
Straight pattern (AA)



a	b	c	d	e	Knurl Size	Cat. No.
1/2"	3.0	6.0	1.5	2.2	L-20x8x10/12	K1-29-0500D-L
5/8"	3.0	6.0	1.5	2.2	L-20x8x10/12	K1-29-0625D-L
3/4"	2.0	7.0	1.5	2.2	L-20x8x10/12	K1-29-0750D-L
1"	2.0	7.0	1.5	2.2	L-20x8x10/12	K1-29-1000D-L
1 1/4"	2.0	6.0	1.5	2.2	L-20x8x10/12	K1-29-1250D-L
1 1/2"	2.0	6.0	1.5	2.2	L-20x8x10/12	K1-29-1500D-L

EAGLE ROCK TECHNOLOGIES INC. *Manufacturers of Specialty Tooling and Accessories since 1963*

One Eagle Rock Drive
 Bath, Pennsylvania
 18014-9648

1-610-759-5200 • Fax: 1-610-759-4340
 1-800-EAGLEROCK • 1-800-324-5376
www.EagleRockONLINE.com