

Metric Conversions

MM	x	0.03937	=	Inches
Inches	x	25.4	=	MM
Grams	x	0.03527	=	Ounces
Ounces	x	28.349527	=	Grams

EAGLE ROCK[®]
TECHNOLOGIES

Knurlcraft[™]

Knurling Tools, Form Type – Double Knurl

No. K1-44

Heavy Duty Scissor Type Knurling Tools

Guaranteed to outlive and outperform any of the imported knockoffs.

New model now available with 0 - 1" capacity.

The New Heavy Duty version of our original Scissor Type Knurling Tool. Featuring both **Standard** and **Counterbored** knurls to accommodate a wide variety of jobs. Knurling pressures are absorbed by the tool not your bed, compound, centers or feed screw.

The Knurls are quickly and easily replaced while still in your machine to minimize down time. Tool strength has been greatly increased to endure even your worst CNC application.

Our exclusive CNC shanks are a solid, one-piece construction that are offset to allow for virtually no turret overhang of the knurl.

Each tool includes one set of Medium pitch, Diamond pattern knurls.

Features

- **Machine:** Manual or CNC Lathe
- **Capacity:** Up to 4" (See Chart)
- **Knurl Sizes:** (See Chart)
- **Knurl Patterns:** Straight (2 knurls AA) Diamond, Male (1 knurl BL, 1 knurl BR)
- **Knurls Included:** 1 set (1 knurl BL and 1 knurl BR) Medium pitch, Diamond pattern

Toolcrib Classics™



EAGLE ROCK[®] TECHNOLOGIES INC.

One Eagle Rock Drive
Bath, Pennsylvania
18014-9648

*Manufacturers of Specialty
Tooling and Accessories since 1963*

1-610-759-5200 • Fax: 1-610-759-4340

1-800-EAGLEROCK • 1-800-324-5376

www.EagleRockONLINE.com

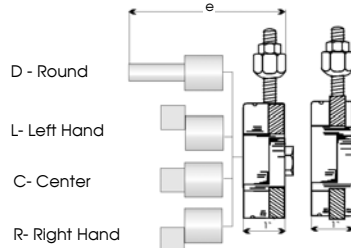
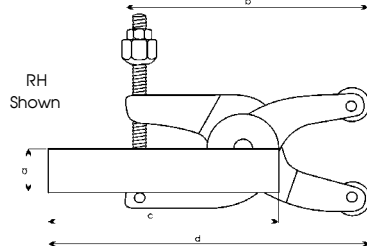
Metric Conversions
 MM x 0.03937 = Inches
 Inches x 25.4 = MM
 Grams x 0.03527 = Ounces
 Ounces x 28.349527 = Grams

EAGLE ROCK[®]
TECHNOLOGIES

Knurlcraft[™]

Knurling Tools, Form Type – Double Knurl

No. K1-44 (Continued)



Capacity	a	b	c	d	e	Knurl Size	Cat. No.
0-1"	5/8 LH	4 1/4	5.0	5 3/4	3.0	E - 3/16 x 3/16 x 1/4	K1-44-10-0625L-E
0-1"	5/8 RH	4 1/4	5.0	5 3/4	3.0	E - 3/16 x 3/16 x 1/4	K1-44-10-0625R-E
0-1"	3/4 LH	4 1/4	5.0	5 3/4	3.0	E - 3/16 x 3/16 x 1/4	K1-44-10-0750L-E
0-1"	3/4 RH	4 1/4	5.0	5 3/4	3.0	E - 3/16 x 3/16 x 1/4	K1-44-10-0750R-E

Capacity	a	b	c	d	e	Knurl Size	Cat. No.
0-2 1/8"	1/2 Center	5 1/2"	5.0	7.0	3.0	E - 3/4 x 3/8 x 1/4	K1-44-21-0500C-E
0-2 1/8"	1/2 LH	5 1/2"	5.0	7.0	3.0	E - 3/4 x 3/8 x 1/4	K1-44-21-0500L-E
0-2 1/8"	1/2 RH	5 1/2"	5.0	7.0	3.0	E - 3/4 x 3/8 x 1/4	K1-44-21-0500R-E
0-2 1/8"	5/8 Center	5 1/2"	5.0	7.0	3.0	E - 3/4 x 3/8 x 1/4	K1-44-21-0625C-E
0-2 1/8"	5/8 LH	5 1/2"	5.0	7.0	3.0	E - 3/4 x 3/8 x 1/4	K1-44-21-0625L-E
0-2 1/8"	5/8 RH	5 1/2"	5.0	7.0	3.0	E - 3/4 x 3/8 x 1/4	K1-44-21-0625R-E
0-2 1/8"	3/4 Round	5 1/2"	—	—	7.0	E - 3/4 x 3/8 x 1/4	K1-44-21-0750D-E
0-2 1/8"	3/4 LH	5 1/2"	5.0	7.0	3.0	E - 3/4 x 3/8 x 1/4	K1-44-21-0750L-E
0-2 1/8"	3/4 RH	5 1/2"	5.0	7.0	3.0	E - 3/4 x 3/8 x 1/4	K1-44-21-0750R-E
0-2 1/8"	1" Round	5 1/2"	—	—	7.0	E - 3/4 x 3/8 x 1/4	K1-44-21-1000D-E
0-2 1/8"	1" LH	5 1/2"	5.0	7.0	3.0	E - 3/4 x 3/8 x 1/4	K1-44-21-1000L-E
0-2 1/8"	1" RH	5 1/2"	5.0	7.0	3.0	E - 3/4 x 3/8 x 1/4	K1-44-21-1000R-E

Capacity	a	b	c	d	e	Knurl Size	Cat. No.
0-2 1/8"	1/2 LH	5 1/2"	5.0	7.0	3.0	L - 20 x 8 x 10/12	K1-44-21-0500L-L
0-2 1/8"	1/2 RH	5 1/2"	5.0	7.0	3.0	L - 20 x 8 x 10/12	K1-44-21-0500R-L
0-2 1/8"	5/8 LH	5 1/2"	5.0	7.0	3.0	L - 20 x 8 x 10/12	K1-44-21-0625L-L
0-2 1/8"	5/8 RH	5 1/2"	5.0	7.0	3.0	L - 20 x 8 x 10/12	K1-44-21-0625R-L
0-2 1/8"	3/4 Round	5 1/2"	—	—	7.0	L - 20 x 8 x 10/12	K1-44-21-0750D-L
0-2 1/8"	3/4 LH	5 1/2"	5.0	7.0	3.0	L - 20 x 8 x 10/12	K1-44-21-0750L-L
0-2 1/8"	3/4 RH	5 1/2"	5.0	7.0	3.0	L - 20 x 8 x 10/12	K1-44-21-0750R-L
0-2 1/8"	1" Round	5 1/2"	—	—	7.0	L - 20 x 8 x 10/12	K1-44-21-1000D-L
0-2 1/8"	1" LH	5 1/2"	5.0	7.0	3.0	L - 20 x 8 x 10/12	K1-44-21-1000L-L
0-2 1/8"	1" RH	5 1/2"	5.0	7.0	3.0	L - 20 x 8 x 10/12	K1-44-21-1000R-L

Capacity	a	b	c	d	e	Knurl Size	Cat. No.
2 1/8-4"	3/4 Center	8 1/4	5.0	8.0	3.0	E - 3/16 x 3/16 x 1/4	K1-44-40-0750C-E
2 1/8-4"	3/4 Round	8 1/4	—	—	7.0	E - 3/16 x 3/16 x 1/4	K1-44-40-0750D-E
2 1/8-4"	3/4 LH	8 1/4	5.0	8.0	3.0	E - 3/16 x 3/16 x 1/4	K1-44-40-0750L-E
2 1/8-4"	3/4 RH	8 1/4	5.0	8.0	3.0	E - 3/16 x 3/16 x 1/4	K1-44-40-0750R-E
2 1/8-4"	1" Center	8 1/4	5.0	8.0	3.0	E - 3/16 x 3/16 x 1/4	K1-44-40-1000C-E
2 1/8-4"	1" Round	8 1/4	—	—	7.0	E - 3/16 x 3/16 x 1/4	K1-44-40-1000D-E
2 1/8-4"	1" LH	8 1/4	5.0	8.0	3.0	E - 3/16 x 3/16 x 1/4	K1-44-40-1000L-E
2 1/8-4"	1" RH	8 1/4	5.0	8.0	3.0	E - 3/16 x 3/16 x 1/4	K1-44-40-1000R-E

* for other shank and knurl configurations, please call

EAGLE ROCK[®] TECHNOLOGIES INC. *Manufacturers of Specialty Tooling and Accessories since 1965*
 One Eagle Rock Drive
 Bath, Pennsylvania
 18014-9648
 1-610-759-5200 • Fax: 1-610-759-4340
 1-800-EAGLEROCK • 1-800-324-5376
 www.EagleRockONLINE.com